

Table of Content

- [New functions and features in the Knowledge Management system](#)
- [Uploading models and adding content to pages in the Knowledge Management system](#)
- [Creating Models from Templates in the Modelling Tool](#)
- [Importing models to the Modelling Tool](#)
- [Tips & Tricks of the Trade!](#)

New functions and features in the Knowledge Management system

Main

Main

Main
Discussion
Open Page
Edit
View History

Main

Welcome to EnterprisePLUS

The EnterprisePLUS software tools (Enterprise+ or E+) is composed of the following components:

1. A Modelling Software component where the expert...
2. A Knowledge Management system where the model... continuous improvements in a collaborative and us...

The Modelling Software Comp

Various enterprise modelling and enterprise architecture future To-Be state, the need for modelling and architecti

E+ has as the first tool incorporated standards from ISO,

Enterprise Modelling Standards:

- Value Modelling Notations (VMN)
- Strategy Modelling Notations (StMN)
- Planning Modelling Notations (PLMN)
- Policy Modelling Notations (PoMN)
- Reporting Modelling Notations (RPMN)
- Risk Modelling Notations (RiMN)
- Rule Modelling Notations (RuMN)
- Quality Modelling Notations (QMN)
- Requirement Modelling Notations (ReMN)
- Capability Modelling Notations (CMN)
- Blockchain Modelling Notations (BcMN)
- Service Modelling Notations (SMN)

We have added a number of new and great functions and features to the E+ KM system.

- **Main:** Links back to the content of the page (what you see here).
- **Discussion:** Enables users to post comments to the page so project teams can discuss progress, etc.
- **Open Page:** Opens the page to the public so that people outside of E+ can see the contents of the page.
- **Edit:** Edits the page content.
- **View History:** See the historical changes to the page. This enables you to go back to a previous version of the page's content.

Uploading models and adding
content to pages in the
Knowledge Management system

Main

Main Discussion

Open Page Edit View History

Main

Welcome to EnterprisePLUS

The EnterprisePLUS software tools (Enterprise+ or E+) is a new breed of integrated modelling and architecture tool. It is offered as a Software as a Service (SaaS) solution, and consists of 2 major application components:

1. A Modelling Software component where the expert can create and work with many different types of modelling and architecture components; and
2. A Knowledge Management system where the models, views and standards can be posted for anybody within the enterprise. This provides a whole new experience to publishing, referencing, commenting and continuous improvements in a collaborative and user-friendly environment.

The Modelling Software Component[[edit](#)]

Various enterprise modelling and enterprise architecture concepts and disciplines have become a normal part of daily work. It doesn't matter if it's about documenting the existing As-Is state or designing the future To-Be state, the need for modelling and architecting aspects of the enterprise is always relevant.

E+ has as the first tool incorporated standards from ISO, OMG, LEADing Practice and IEEE to support the following standards:

Enterprise Modelling Standards:

- Value Modelling Notations (VMN)
- Strategy Modelling Notations (StMN)
- Planning Modelling Notations (PLMN)
- Policy Modelling Notations (PoMN)
- Reporting Modelling Notations (RPMN)
- Risk Modelling Notations (RiMN)
- Rule Modelling Notations (RuMN)
- Quality Modelling Notations (QMN)
- Requirement Modelling Notations (ReMN)
- Capability Modelling Notations (CMN)
- Blockchain Modelling Notations (BcMN)
- Service Modelling Notations (SMN)

From the front page of the E+ Knowledge Management system, click on the “NORTHERN HEALTH KM” function.

Main

Topics

Category

Template Page

Tutorials

Template Page Discussion

Open Page

Edit

View History

Template Page

Contents

[hide]

- 1 Heading 1
 - 1.1 Heading 2
 - 1.1.1 Heading 3
 - 1.1.1.1 Heading 4
 - 1.1.1.1.1 Heading 5
 - 1.1.1.1.1.1 Heading 6
 - 1.1.2 Text Decoration
 - 1.1.3 Unordered lists
 - 1.1.4 Ordered lists
 - 1.1.5 Tables

Heading 1[edit]

Heading 2[edit]

Heading 3[edit]

Heading 4[edit]

Heading 5[edit]

Heading 6[edit]

Text Decoration[edit]

Example of ordinary text.

Example of italic text.

We have already created a "Template Page" for you in the KM system, so all you have to do to get started with creating a new page is to go to the "Template Page", and then click on the "Edit" function.

Main

Topics

Category

Template Page

Tutorials

Template Page Discussion

Open Page

Edit

View History

Editing Flsmidth KM:Template Page

It is important to add the "[[Category: NameOfCategory]]" tag at the bottom of the page. The "NameOfCategory" should be changed to the name of the category wherein you wish your page to appear. You can also add your page to any of the existing categories in the left side panel. It is also possible to post your page in multiple categories. Then you just create a new category tag for each category.

For example:

[[Category: Category1]]

[[Category: Category2]]

[[Category: Category3]]

B I Advanced Special characters Help

Heading

Format

Insert

Video

Button

CONFIRM

DISAGREE

```

{{DISPLAYTITLE: Template Page}}
    
```

```

= Heading 1 =
    
```

```

== Heading 2 ==
    
```

```

=== Heading 3 ===
    
```

```

==== Heading 4 ====
    
```

```

===== Heading 5 =====
    
```

```

===== Heading 6 =====
    
```

```

=== Text Decoration ===
    
```

In the page editor window, simply use your "Select All" function (CTRL+A) to select all the code. Then copy it to memory (CTRL+C).

Main

Topics

Category

Template Page

Tutorials

Template Page Discussion

Editing Flsmidth KM:Template Page

It is important to add the "[[Category: NameOfCategory]]" tag at the bottom of the page. The "NameOfCategory" should be changed to the name of the category. You can also add your page to any of the existing categories in the left side panel. It is also possible to post your page in multiple categories. Then you just create a new category.

For example:

```
[[Category: Category1]]
[[Category: Category2]]
[[Category: Category3]]
```

- Flsmidth KM
- Edit [Edit](#) [View History](#)
- History
- New Page
- Upload File
- Delete
- Move
- Protect

B I Advanced Special characters HelpHeading Format Insert Video Button [CONFIRM](#) [DISAGREE](#)

```
{{DISPLAYTITLE: Template Page}}
= Heading 1 =
== Heading 2 ==
=== Heading 3 ===
==== Heading 4 ====
===== Heading 5 =====
==== Heading 6 =====
=== Text Decoration ===
```

Next, click on the "New Page" function in the Knowledge Management dropdown menu at the top.

- Main
- Topics
 - Category
 - Template Page
 - Tutorials

Editing Flsmidth KM:Template Page

It is important to add the "[[Category: NameOfCategory]]" tag at the bottom of the page. The "NameOfCategory" should be changed to the name of the category wherein you wish your page to appear. You can also add your page to any of the existing categories in the left side panel. It is also possible to post your page in multiple categories. Then you just create a new category tag for each category.

For example:
 [[Category: Category1]]
 [[Category: Category2]]
 [[Category: Category3]]

B I Advanced Special characters Help

Heading Format Insert Video Button CONFIRM DISAGREE

{{DISPLAYTITLE: Template Page}}

= Heading 1 =

== Heading 2 ==

=== Heading 3 ===

==== Heading 4 ====

===== Heading 5 =====

=====
 ===== Heading 6 =====

==== Text Decoration ===

Choose name of the page

Page Name

CREATE CANCEL

Write a name for your new page and click the "CREATE" button.

Main

Topics

Category

Tutorials

New Page

Discussion

Open Page

Edit

View History

| Business Architecture
| Business Architecture Reference Content
LEAD-ES40002PGBCPS!
}

Example of embedded image file:

[[File:E+ 4 FLSmidth-01.png | 300 px | link= | alt= | left]]

[[File:Guidelines SMDH.jpg | 500 px | link= | alt= | left]]

[[Media:Process - Supplier Creation.pptx | Name Of The Document: Creation Process | it is a process describing creation of the supplier]]

[[Category: Category]]

Summary:

Watch this page

Now you can paste in (CTRL+V) the code from the "Template Page" and click the "Save page" function.

Main

Topics

Category

[New Page](#)[Template Page](#)

Tutorials

[New Page](#)[Discussion](#)[Open Page](#)[Edit](#)[View History](#)[New Page](#)

Contents

[\[hide\]](#)

- 1 Heading 1
 - 1.1 Heading 2
 - 1.1.1 Heading 3
 - 1.1.1.1 Heading 4
 - 1.1.1.1.1 Heading 5
 - 1.1.1.1.1.1 Heading 6
 - 1.1.2 Text Decoration
 - 1.1.3 Unordered lists
 - 1.1.4 Ordered lists
 - 1.1.5 Tables

Heading 1 [\[edit\]](#)Heading 2 [\[edit\]](#)Heading 3 [\[edit\]](#)Heading 4 [\[edit\]](#)Heading 5 [\[edit\]](#)Heading 6 [\[edit\]](#)Text Decoration [\[edit\]](#)

Example of ordinary text.

Example of italic text.

Once you have saved your new page in the KM system, it will be shown in any categories you have add it to.

Main

Topics

Category

[New Page](#)[Template Page](#)

Tutorials

[New Page](#) [Discussion](#)

New Page

Contents

[\[hide\]](#)

- 1 [Heading 1](#)
 - 1.1 [Heading 2](#)
 - 1.1.1 [Heading 3](#)
 - 1.1.1.1 [Heading 4](#)
 - 1.1.1.1.1 [Heading 5](#)
 - 1.1.1.1.1.1 [Heading 6](#)
 - 1.1.2 [Text Decoration](#)
 - 1.1.3 [Unordered lists](#)
 - 1.1.4 [Ordered lists](#)
 - 1.1.5 [Tables](#)

Heading 1 [\[edit\]](#)

Heading 2 [\[edit\]](#)

Heading 3 [\[edit\]](#)

Heading 4 [\[edit\]](#)

Heading 5 [\[edit\]](#)

Heading 6 [\[edit\]](#)

Text Decoration [\[edit\]](#)

Example of ordinary text.

Example of italic text.

If you wish to upload a picture or a document to your page, use the "Upload File" function in the Knowledge Management dropdown menu.

Flsmidth KM

[Edit](#)[Edit](#)[View History](#)[History](#)[New Page](#)[Upload File](#)[Delete](#)[Move](#)[Protect](#)

Upload

Main

Upload file

Use the form below to upload files. To view or search previously uploaded files go to the [list of uploaded files](#), (re)uploads are also logged in the [upload log](#), deletions in the [deletion log](#).

To include a file in a page, use a link in one of the following forms:

- `[[File:File.jpg]]` to use the full version of the file
- `[[File:File.png|200px|thumb|left|alt text]]` to use a 200 pixel wide rendition in a box in the left margin with "alt text" as description
- `[[Media:File.ogg]]` for directly linking to the file without displaying the file

Source file

Source filename: No file chosen

Maximum file size: 100 MB (your chosen file from your computer)

Permitted file types: png, gif, jpg, jpeg, doc, xls, mpp, pdf, ppt, tiff, bmp, docx, xlsx, pptx, ps, odt, ods, odp, odg, zip, mp4.

File description

Destination filename:

Summary:

Licensing:

{{None}}

[Edit license options](#)

[Upload options](#)

This function takes you to a new page where you can upload files of various formats of a maximum of 100 MB file size.

Upload

Main

Upload file

Use the form below to upload files. To view or search previously uploaded files go to the [list of uploaded files](#), (re)uploads are also logged in the [upload log](#), deletions in the [deletion log](#).

To include a file in a page, use a link in one of the following forms:

- `[[File:File.jpg]]` to use the full version of the file
- `[[File:File.png|200px|thumb|left|alt text]]` to use a 200 pixel wide rendition in a box in the left margin with "alt text" as description
- `[[Media:File.ogg]]` for directly linking to the file without displaying the file

Source file

Source filename: No file chosen

Maximum file size: 100 MB (your chosen file from your computer)

Permitted file types: png, gif, jpg, jpeg, doc, xls, mpp, pdf, ppt, tiff, bmp, docx, xlsx, pptx, ps, odt, ods, odp, odg, zip, mp4.

File description

Destination filename:

Summary:

Licensing:

{{None}}

[Edit license options](#)

[Upload options](#)

Click the "Choose File" function to select a file to upload.

Upload

Main


Upload file

Use the form below to upload files. To view or search previously uploaded files go to the [list of uploaded files](#), (re)uploads are also logged in the [upload log](#), deletions in the [deletion log](#).

To include a file in a page, use a link in one of the following forms:

- `[[File:File.jpg]]` to use the full version of the file
- `[[File:File.png|200px|thumb|left|alt text]]` to use a 200 pixel wide rendition in a box in the left margin with "alt text" as description
- `[[Media:File.ogg]]` for directly linking to the file without displaying the file

Source file



For the purpose of this demonstration, I will upload the "RPA Flow.png" file to the KM system.

RPA Flow.png
1152 × 483, 54 KB

Source filename: RPA Flow.png

Maximum file size: 100 MB (your chosen file from your computer)

Permitted file types: png, gif, jpg, jpeg, doc, xls, mpp, pdf, ppt, tiff, bmp, docx, xlsx, pptx, ps, odt, ods, odp, odg, zip, mp4.

File description

Destination filename:

Summary

UploadRPA Flow.png
1152 × 483, 54 KB**Source filename:** RPA Flow.png

Maximum file size: 100 MB (your chosen file from your computer)

Permitted file types: png, gif, jpg, jpeg, doc, xls, mpp, pdf, ppt, tiff, bmp, docx, xlsx, pptx, ps, odt, ods, odp, odg, zip, mp4.

File description

Destination filename: **Summary:****Licensing:**

{{None}}

[Edit license options](#)

Upload options

- Watch this file
 Ignore any warnings

Scroll down to the bottom and click on the "Upload file" function.

RPA Flow.png

Main

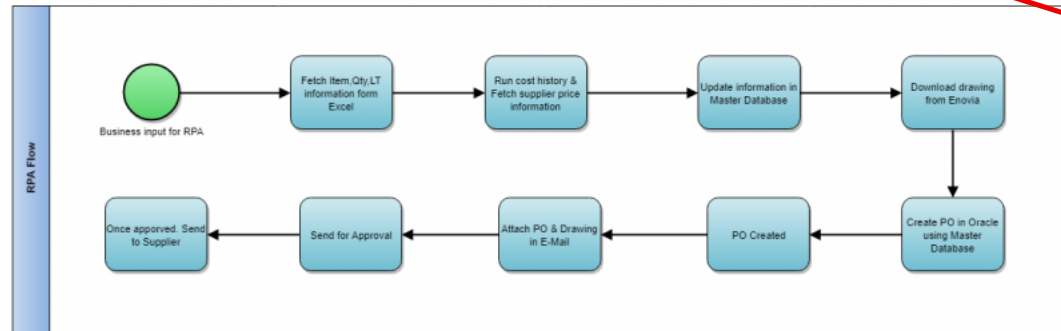
RPA Flow.png Discussion

Open Page Edit View History

File: RPA Flow.png

- File
- File history
- File usage

RPA Flow					
SPIN 2 Model	VERSION:	1	AUTHOR:	2018-07-18T00:00:00 by Mohamed Azaruben S	VERSION HISTORY:
				2018-07-20T00:00:00 by Mohamed Azaruben S	



Size of this preview: 800 × 335 pixels. Other resolution: 320 × 134 pixels.
 Original file (1,152 × 483 pixels, file size: 54 KB, MIME type: image/png)

Licensing[edit]

{{None}}

File history

Click on a date/time to view the file as it appeared at that time.

	Date/Time	Thumbnail	Dimensions	User	Comment

Your file has now been added to the KM database and can be used anywhere in the Knowledge Management system.

Select and copy the name of the file if you wish to show (embed) this model on your page in the KM system.

Main

Topics

Category

[New Page](#)[Template Page](#)

Tutorials

New Page

Discussion

Open Page

Edit

View History

B I Advanced ▾ Special characters ▾ Help

Heading ▾

Format

Insert

Video

Button

CONFIRM

DISAGREE

`{{DISPLAYTITLE: New Page}}``= RPA Flow =`

This page shows an image of the "RPA Flow" model that has been uploaded as a .png image into the "Knowledge Management" system.

Example of an embedded image of the "RPA Flow.png" file:

`[[File:RPA Flow.png|800 px|left]]`

Example of a file that other users can download to their computer:

`[[Media:RPA Flow.pdf|Download the RPA Flow model as a .pdf document]]``[[Category: Category]]`

Summary:

 Watch this page

Once you have uploaded the files you need for your page content, click the "Edit" function on your new page.

Main

Topics

Category

New Page

Template Page

Tutorials

New Page

Discussion

Open Page

Edit

View History

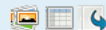
B I Advanced ▾ Special characters ▾ Help

Heading ▾

Format



Insert



Video



Button

CONFIRM

DISAGREE

`{{DISPLAYTITLE: New Page}}``= RPA Flow =`

This page shows an image of the "RPA Flow" model that has been uploaded as a .png image into the "Knowledge Management" system.

Example of an embedded image of the "RPA Flow.png" file:

`[[File:RPA Flow.png|800 px|left]]`

Example of a file that other users can download to their computer:

`[[Media:RPA Flow.pdf|Download the RPA Flow model as a .pdf document]]``[[Category: Category]]`

Summary:

 Watch this page

You can now clean up the template page so that you only have the content (code) that you see here in this screenshot.

Main

Topics

Category

New Page

Template Page

Tutorials

New Page

Discussion

Open Page

Edit

View History

B I Advanced ▾ Special characters ▾ Help

Heading ▾ Format Insert Video Button CONFIRM DISAGREE

{{DISPLAYTITLE: New Page}}
= RPA Flow =

This page shows an image of the "RPA Flow" model that has been uploaded as a .png image into the "Knowledge Management" system.

Example of an embedded image of the "RPA Flow.png" file:

[[File:RPA Flow.png|800 px|left]]

Example of a file that other users can download to their computer:

[[Media:RPA Flow.pdf|Download the RPA Flow model as a .pdf document]]

[[Category: Category]]

Summary:

Watch this page

Notice that I have written some basic text that describes what is going on.

Main

Topics

Category

New Page

Template Page

Tutorials

New Page

Discussion

Open Page

Edit

View History

B I Advanced Special characters Help

Heading Format Insert Video Button CONFIRM DISAGREE

{{DISPLAYTITLE: New Page}}
= RPA Flow =

This page shows an image of the "RPA Flow" model that has been uploaded as a .png image into the "Knowledge Management" system.

Example of an embedded image of the "RPA Flow.png" file:

[[File:RPA Flow.png|800 px|left]]

Example of a file that other users can download to their computer:

[[Media:RPA Flow.pdf|Download the RPA Flow model as a .pdf document]]

[[Category: Category]]

Summary:

Watch this page

To show a picture directly on the page itself, we use the "File:" function and add the respective name of the picture file (and any wanted attributes thereafter).

In this case, we add the filename "RPA Flow.png" and set the width of the picture to "800 px" to make it wider.

Main

Topics

Category

New Page

Template Page

Tutorials

New Page

Discussion

Open Page

Edit

View History

B I Advanced ▾ Special characters ▾ Help

Heading ▾

Format

Insert

Video

Button

CONFIRM

DISAGREE

{{DISPLAYTITLE: New Page}}

= RPA Flow =

This page shows an image of the "RPA Flow" model that has been uploaded as a .png image into the "Knowledge Management" system.

Example of an embedded image of the "RPA Flow.png" file:

[[File:RPA Flow.png|800 px|left]]

Example of a file that other users can download to their computer:

[[Media:RPA Flow.pdf|Download the RPA Flow model as a .pdf document]]

[[Category: Category]]

Summary:

Watch this page

To add a link to a file that other users are supposed to be able to download, we use the "Media:" function and add the respective name of the document file (and any wanted attributes thereafter).

In this case, we add the filename "RPA Flow.pdf" and set the name of the link to "Download the RPA Flow model as a .pdf document"

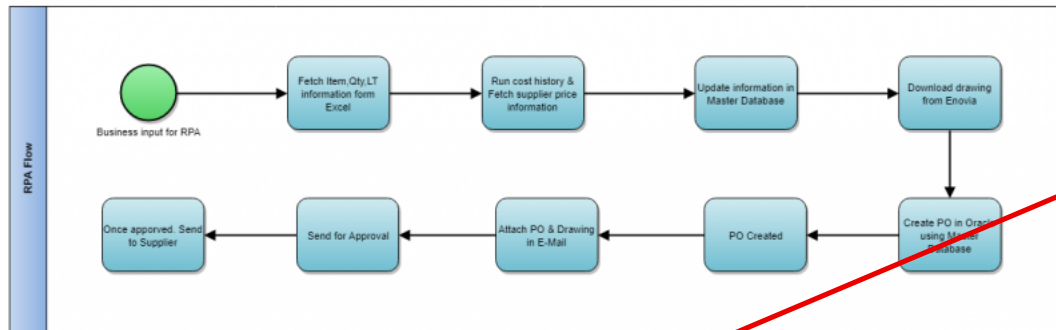
New Page

RPA Flow[edit]

This page shows an image of the **RPA Flow** model that has been uploaded as a .png image into the **Knowledge Management** system.

Example of an embedded image of the "RPA Flow.png" file:

RPA Flow						
BPMN 2 Model	VERSION:	1	AUTHOR:	2018-07-18T00:00:00 by Mohamed Azarudeen S	VERSION AUTHOR:	2018-07-20T00:00:00 by Mohamed Azarudeen S



Example of a file that other users can download to their computer:

[Download the RPA Flow model as a .pdf document](#)

Category: Category

You now have a fully customized content page in your KM system.

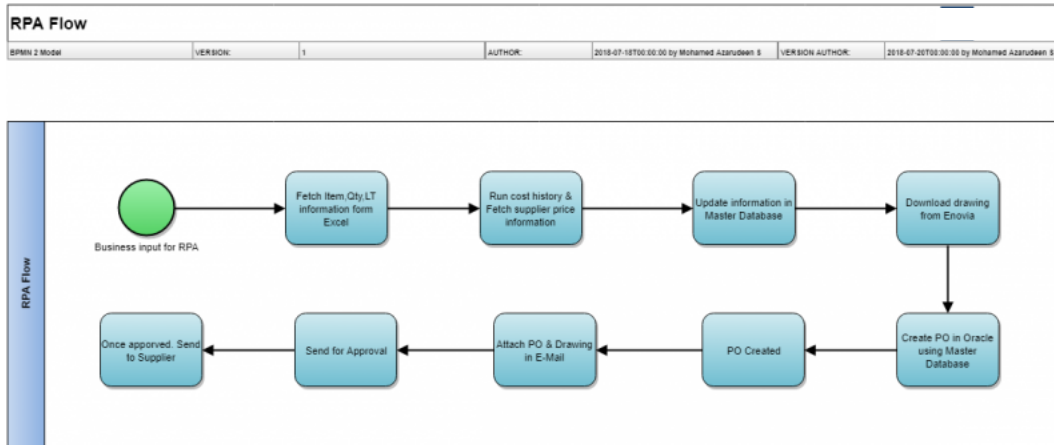
In this example, we show a visual representation of the RPA Flow model by using the .png file format, and we add a downloadable link to the .pdf file as well.

New Page

RPA Flow[edit]

This page shows an image of the **RPA Flow** model that has been uploaded as a .png image into the **Knowledge Management** system.

Example of an embedded image of the "RPA Flow.png" file:



Example of a file that other users can download to their computer:

[Download the RPA Flow model as a .pdf document](#)

Category: [Category](#)

I have created this new page in your E+ system so that you can easily copy/paste from it if you need it for future content pages.

Creating Models from Templates in the Modelling Tool

Main

Main Discussion

Open Page

- Create Object
- Create Map
- Create Matrix
- Create Model
- My Objects
- My Maps
- My Matrices
- My Models

Main

Welcome to EnterprisePLUS

The EnterprisePLUS software tools (Enterprise+ or E+) is a new breed of integrated modelling and architecture tool. It is offered as a Software as a Service (SaaS) solution, and consists of the following components:

1. A Modelling Software component where the expert can create and work with many different types of modelling and architecture components; and
2. A Knowledge Management system where the models, views and standards can be posted for anybody within the enterprise. This provides a whole new experience to publishing, referencing, commenting and continuous improvements in a collaborative and user-friendly environment.

The Modelling Software Component

Various enterprise modelling and enterprise architecture tools are used to document the existing As-Is state or designing the future To-Be state, the need for modelling and architecture tools is increasing.

To create a model from a template into E+, simply click the “Create Model” function from the dropdown menu under ‘Software Tools’.

E+ has as the first tool incorporated standards from ISO, OMG, LEADing Practice and IEEE to support the following standards:

Enterprise Modelling Standards:

- Value Modelling Notations (VMN)
- Strategy Modelling Notations (StMN)
- Planning Modelling Notations (PLMN)
- Policy Modelling Notations (PoMN)
- Reporting Modelling Notations (RPMN)
- Risk Modelling Notations (RiMN)
- Rule Modelling Notations (RuMN)
- Quality Modelling Notations (QMN)
- Requirement Modelling Notations (ReMN)
- Capability Modelling Notations (CMN)
- Blockchain Modelling Notations (BcMN)
- Service Modelling Notations (SMN)



- New...
- Open...
- Save Ctrl+S
- Save as... Ctrl+Shift+S
- Import VSDX...
- Import XML...
- Import SVG...
- Export...
- Page Setup...
- Print... Ctrl+P

Toolbar icons: Eraser, Copy, Paste, Lasso, Pen, Eraser, Undo, Redo, Zoom In, Zoom Out, Fit to Page, Fit to Window, Refresh, and a plus sign for more options.

Once the new model window has opened, click on the "File > New" function in the top dropdown menu.

Search Shapes

General

- Text
- Misc
- Advanced
- Basic
- Arrows

Diagram

View

- Grid 10 pt
- Guides
- Page View
- Background Image

Options

- Connection arrows
- Connection points

Paper Size

US-Letter (8.5" x 11")

Portrait Landscape

Edit Data

Clear Default Style

This is a brand new feature of the E+ modelling tool where you now have access to many great templates across different categories. Simply select the model you want to create the template for, and then click the “Create” function at the bottom right.

Model New model

EXIT

File Edit View Arrange Extras

100%

Enterprise Navigator

Create Objects

OBJECTS

FLSmith Objects (all)

Selected Objects

MODELS

Related Models

SHAPES

Search Shapes

General



Misc

Advanced

Basic

Arrows

Enterprise Navigator: Choose Artefact

Artefacts

Select artefact subcategory

Value Modelling (14)

Capability Modelling (3)

Service Modelling (0)

Process Modelling (13)

Application Modelling (0)

Data Modelling (0)

Platform Modelling (0)

Infrastructure Modelling (0)

Business Architecture (1)

Information Architecture (3)

Technology Architecture (2)

Enterprise Architecture (1)

Key Models (60)



Process Model Standard [2 Lanes, 3 Columns]



Process Model Standard [2 Lanes, 4 Columns]



Process Model Standard [3 Lanes, 1 Column]



Cancel

Create

Diagram

View

Grid 10 pt

Guides

Page View

Background Image

Options

Connection arrows

Connection points

Paper Size

US-Letter (8.5" x 11")

Portrait Landscape

Edit Data

Clear Default Style

Process Model Standard [3 Lanes, 1 Column]

Enterprise Navigator
Create Objects

OBJECTS

- FLSmith Objects (all)
- Selected Objects

MODELS

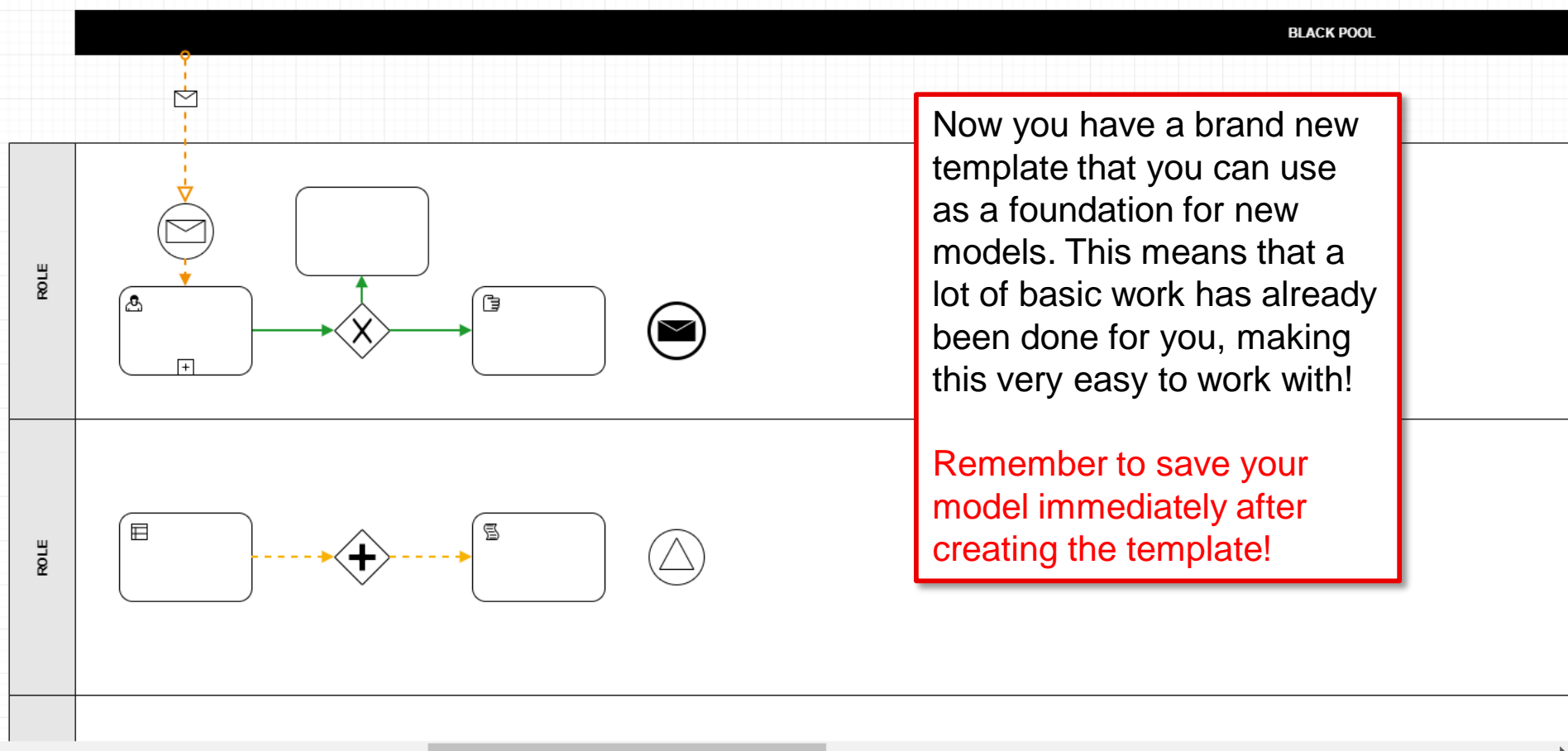
- Related Models

SHAPES

Search Shapes

General

- Text
- Misc
- Advanced
- Basic
- Arrows



Now you have a brand new template that you can use as a foundation for new models. This means that a lot of basic work has already been done for you, making this very easy to work with!

Remember to save your model immediately after creating the template!

Diagram

View

- Grid
- Guides
- Page View
- Background

Options

- Connection arrows
- Connection points

Paper Size

US-Letter (8.5" x 11")

Portrait Landscape

Edit Data

Clear Default Style

Importing models to the Modelling Tool

Main

Main Discussion

Open Page

- Create Object
- Create Map
- Create Matrix
- Create Model
- My Objects
- My Maps
- My Matrices
- My Models

Main

Welcome to EnterprisePLUS

The EnterprisePLUS software tools (Enterprise+ or E+) is a new breed of integrated modelling and architecture tool. It is offered as a Software as a Service (SaaS) solution, and consists of the following components:

1. A Modelling Software component where the expert can create and work with many different types of modelling and architecture components; and
2. A Knowledge Management system where the models, views and standards can be posted for anybody within the enterprise. This provides a whole new experience to publishing, referencing, commenting and continuous improvements in a collaborative and user-friendly environment.

The Modelling Software Component

Various enterprise modelling and enterprise architecture use cases, whether for documenting the existing As-Is state or designing the future To-Be state, the need for modelling and architecture is a common one. EnterprisePLUS provides a solution for this need.

E+ has as the first tool incorporated standards from ISO, OMG, LEADing Practice and IEEE to support the following standards:

Enterprise Modelling Standards:

- Value Modelling Notations (VMN)
- Strategy Modelling Notations (StMN)
- Planning Modelling Notations (PLMN)
- Policy Modelling Notations (PoMN)
- Reporting Modelling Notations (RPMN)
- Risk Modelling Notations (RiMN)
- Rule Modelling Notations (RuMN)
- Quality Modelling Notations (QMN)
- Requirement Modelling Notations (ReMN)
- Capability Modelling Notations (CMN)
- Blockchain Modelling Notations (BcMN)
- Service Modelling Notations (SMN)

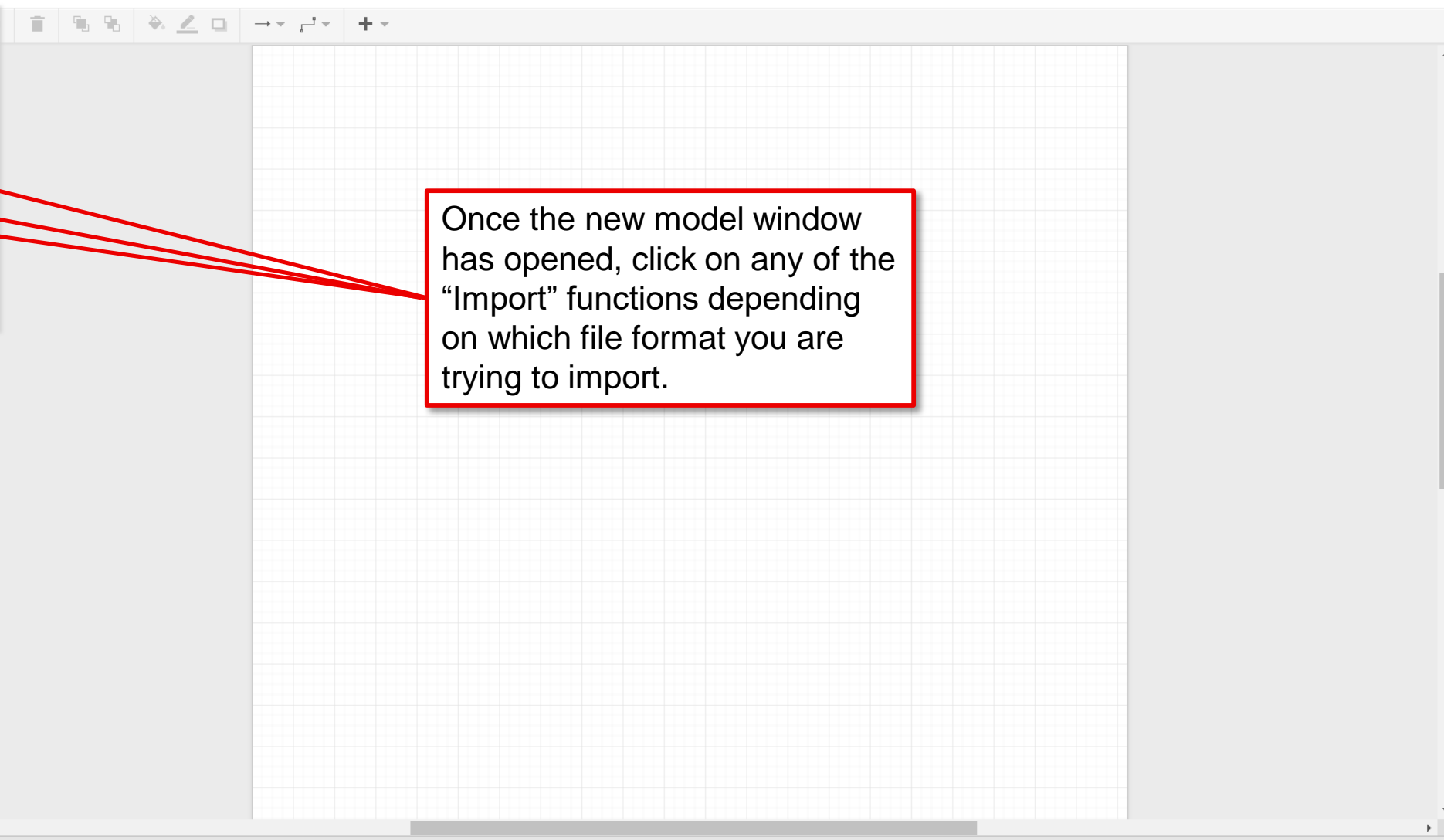
To import a model from a template into E+, simply click the “Create Model” function from the dropdown menu under ‘Software Tools’.

- New...
- Open...
- Save Ctrl+S
- Save as... Ctrl+Shift+S
- Import VSDX...
- Import XML...
- Import SVG...
- Export...
- Page Setup...
- Print... Ctrl+P

Search Shapes

General

- Text
- Misc
- Advanced
- Basic
- Arrows



Diagram

View

- Grid 10 pt
- Guides
- Page View
- Background Image

Options

- Connection arrows
- Connection points

Paper Size

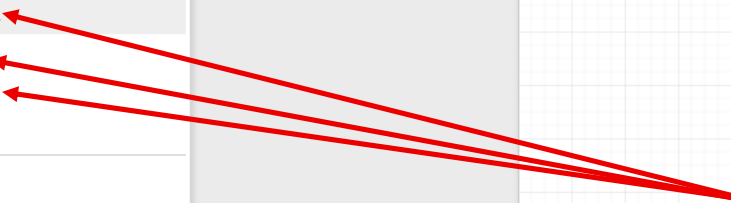
US-Letter (8.5" x 11")

Portrait Landscape

Edit Data

Clear Default Style

Once the new model window has opened, click on any of the "Import" functions depending on which file format you are trying to import.



- New...
- Open...
- Save Ctrl+S
- Save as... Ctrl+Shift+S
- Import VSDX...**
- Import XML...
- Import SVG...
- Export...
- Page Setup...
- Print... Ctrl+P

Search Shapes

General

Text

Misc

Advanced

Basic

Arrows

Name	Size
Visio	
E+ 4 FLSmidth.ai	163 KB
E+ 4 FLSmidth-01.png	6 KB
FLSmidth Users.xls	265 KB
flsmidth.eps	23 KB
FLSmidth.zip	93,934 KB
LEAD Artefacts & Templates.zip	10,722 KB
LEADing Practice - EnterprisePLUS Software License Agreement.docx	93 KB
New Text Document.txt	2 KB
RPA Flow.vsdx	72 KB
RPA Input Sheet Creation with the required data for PO Automation.vsdx	54 KB
RPA Programming & Testing.vsdx	56 KB
Screenshot_1.png	170 KB
Screenshot_2.png	101 KB
Screenshot_3.png	
Screenshot_4.png	
Working with E+ Modelling Tool 1.mp4	
Working with E+ Modelling Tool 2.mp4	
Working with E+ Modelling Tool 3.mp4	41,394 KB
Working with KM & Templates.pptx	14,880 KB
Working with Objects in E+ .pdf	14,652 KB
Working with Objects in E+ .pptx	13,524 KB

Select the file (model) you wish to import and click "Open" in the browser window.

Diagram

View

- Grid 10 pt
- Guides
- Page View
- Background Image

Options

- Connection arrows
- Connection points

Paper Size

US-Letter (8.5" x 11")

Portrait Landscape

Edit Data

Clear Default Style

- New...
- Open...
- Save Ctrl+S
- Save as... Ctrl+Shift+S
- Import VSDX...
- Import XML...
- Import SVG...
- Export...
- Page Setup...
- Print... Ctrl+P

Toolbar with icons for file operations, navigation, and editing.

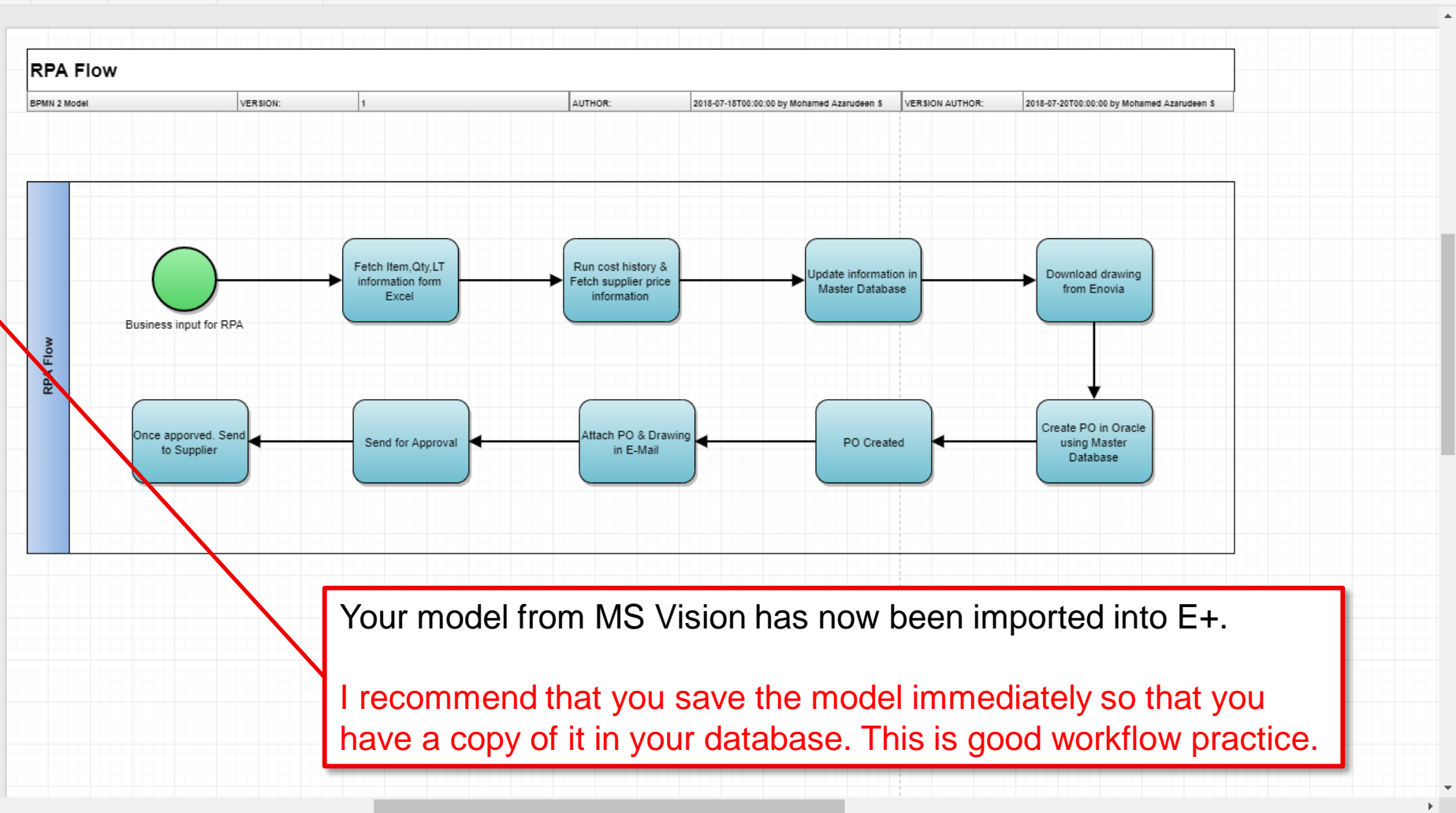


Diagram Properties Panel

View

- Grid 10 pt
- Guides
- Page View
- Background Image

Options

- Connection arrows
- Connection points

Paper Size

US-Letter (8.5" x 11")

Portrait Landscape

Edit Data

Clear Default Style

Your model from MS Vision has now been imported into E+.

I recommend that you save the model immediately so that you have a copy of it in your database. This is good workflow practice.

Tips & Tricks of the Trade!

Get to know and learn some nice-to-know tips and tricks of how to work effectively with the modelling tool.

Many basic functions work the same way as most other general software products. This includes, but is not limited to, functions such as:

- **CTRL+A** = Select all elements on the canvas.
- **CTRL+S** = Saves the current model using the same name. A good general workflow practice is to USE THIS FUNCTION OFTEN.
- **CTRL+Shift+L** = Shows the “Layers” window that you can use to place shapes, texts and object elements in different layers (on top or below each other). Makes it easier to control many elements across specific layers.
- **CTRL+Shift+G** = Show a Grid-based canvas background. Useful for structuring and aligning elements on your canvas.
- **CTRL+G** = Groups elements together. Simply pick the elements you want, and the hit CTRL+G to group the elements together. Makes it easy to drag multiple elements around on the canvas while keeping the design intact.
- **CTRL+L** = Locks/unlocks elements (shapes, texts, objects, etc.) on the canvas. This is very useful for locking elements so that you do not accidentally delete or move them around unintentionally.

All of these highly useful functions are also available from the top main menu.

EXTRA TIPS:

- Make it a habit of turning on the “Grid” from the “View” menu. It enables a background grid where elements can “snap” to the lines. It makes it easy and convenient to keep your design elements aligned throughout the model canvas.
- Use the arrow keys to move elements by 1 point incrementally. Hold down SHIFT and use the arrow keys to move elements by 10 point incrementally. This makes it easier and more convenient to keep exact distances between design elements.

Enjoy your modelling journey!
We hope that you had a pleasant learning experience and that you gained valuable knowledge of how to work with E+!